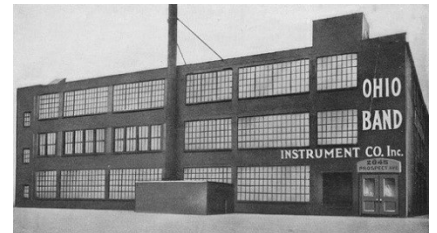


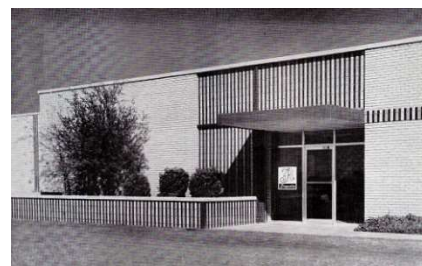
F. A. Reynolds Co., Inc.

Cleveland, Ohio

- 1883 Foster Allen Reynolds is born in Medina, Ohio.
- 1892 Harper A. Reynolds (1892-1975) born in Medina.
- 1903 Foster marries Francis in Elkhart, Indiana, Oct 28.
- 1904 Daughter Florence is born in Grand Rapids, MI, Sept 3 (death record). Foster probably working for J.W. York by this time. An article in the *Cleveland Plain Dealer* in 1936 says that he had 32 years of experience in brass making.
- 1906 First listing in the Cleveland city directory from August; toolmaker, rooms #125 Chestnut Ave (now working for H. N. White).
- 1908 Reynolds is a foreman for White (dir).
- 1910 Factory cornet maker (census); foreman in directory.
- 1918 Foster is factory Superintendent for White. Brother Harper now joins him as machinist (WWI draft).
- 1920 Foster is superintendent; Harper is machinist (census).
- 1930 Foster is factory manager; Harper is foreman (census).
- 1935 Foster leaves White later this year and incorporates as the Foster A. Reynolds Co., #2837-2853 Prospect Ave SE, with a ten-year lease on a modern brick factory (photo 2). The Ohio Band Instrument Co, a subsidiary, will operate in the same location. Production starts in early 1936 with twenty workers (*Cleveland Plain Dealer*). Foster divorces Francis this year and by 1936 married Myrtle (19 years younger).
- 1936 F. A. Reynolds Co Inc, inc. on 11/27/35, #2845 Prospect Ave SE, Foster president, Harper treasurer (directory).
- 1938 F. A. Reynolds Co, Foster pres, E. H. Roth vp, Max Scherl sec, Harper treasurer (dir). Early cornets copy the King Master model design (photo 3, auction sale).
- 1940 Now 80 workers (*Cleveland Plain Dealer*).
- 1946 Foster sells his shares to Max Scherl and retires, then later works as a consultant & manager for Olds.
- 1947 Reynolds and Ohio brands are merged with the Regent line being replaced by the Roth models for students. The Emperor name is first used in Nov. (trademark registration) for intermediate models with Reynolds the top model (photo 5 from 1946 trumpet w/sterling silver bell, auction photo).



- 1949 The Contempora name is first used (trademark registration) for their new premium horns (photo 2 from auction) and the top Reynolds models become the "Professional" series (photo 3 author's collection).
- 1952 "Roth-Reynolds" is now used on the instruments.
- 1955 Max Scherl retires, Heinrich Roth now president. Start of Contempora Leonard Smith model cornet & trumpet and the Hi-Fi model cornet (photo 4 from auction).
- 1956 Trombone #42393 is purchased new.
- 1959 Start of the Hi-Fi trumpet & trombone and the Argenta model horns made from nickel silver.
- 1960 Foster Reynolds dies of a heart attack at work in the Olds factory in Fullerton, CA. Richards Music Corp. buys Reynolds on December 30th.
- 1961 The Medalist student models replace the Roth and are made by Blessing. Reynolds is dissolved on 7/15/61.
- 1964 Reynolds is sold to CMI who also owns Olds. Production is moved to Fullerton and a new factory at #5520 N 1st St in Abilene*, Texas (inc. on 8/3/64) (photo 5 from catalog).
- 1969 Reynolds is sold to ECL which becomes Norlin Industries.
- 1970 All instruments are made in Fullerton and the Abilene plant is sold to Conn. Models now are Contempora, Emperor and Medalist (catalog).
- 1979 Reynolds is closed in July and all the contents are auctioned off (news article). The name is purchased by P.J. LaPlaca Associates Ltd (Peter LaPlaca was a VP for CMI).



Reynolds Abilene, TX Factory

1964 Chicago Musical Instruments (CMI) opens a new factory for Reynolds in Abilene in August (Trumpet Herald).



1964 The new factory appears in advertising in December.

1965 Reynolds holds an open house in April (Trumpet Herald).

1970 The plant closes early in the year and all production is moved to the Olds plant in Fullerton.

1971 "Conn buys former CMI Reynolds plant in Texas. The 100,000 sq ft plant, built in 1965, is the newest in the band industry. The new Abilene plant will begin production in late February." (*The Music Trades*, February 1971)

Conn opened on January 18th after being closed in early 1970 when CMI moved to Fullerton. CMI/Reynolds still has a distribution warehouse at 370 Walnut St, managed by James Caldwell, president of Reynolds and Olds. All instruments from Fullerton and Chicago are distributed from here (*Abilene Reporter-News*, March 28, 1971).

View in 1968



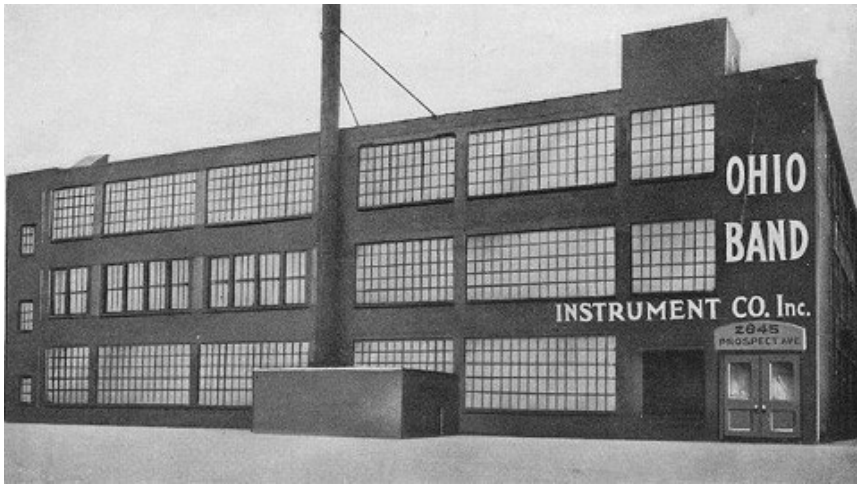
The aerial view at right shows a railroad siding, now abandoned, curving around behind the plant.

*The Abilene plant was the idea of GM Mr. Caldwell, a native of that city. A lack of experienced workers there hindered the result.

Author's photos at right: 1948 model 50 #19261 w/Sterling bell.

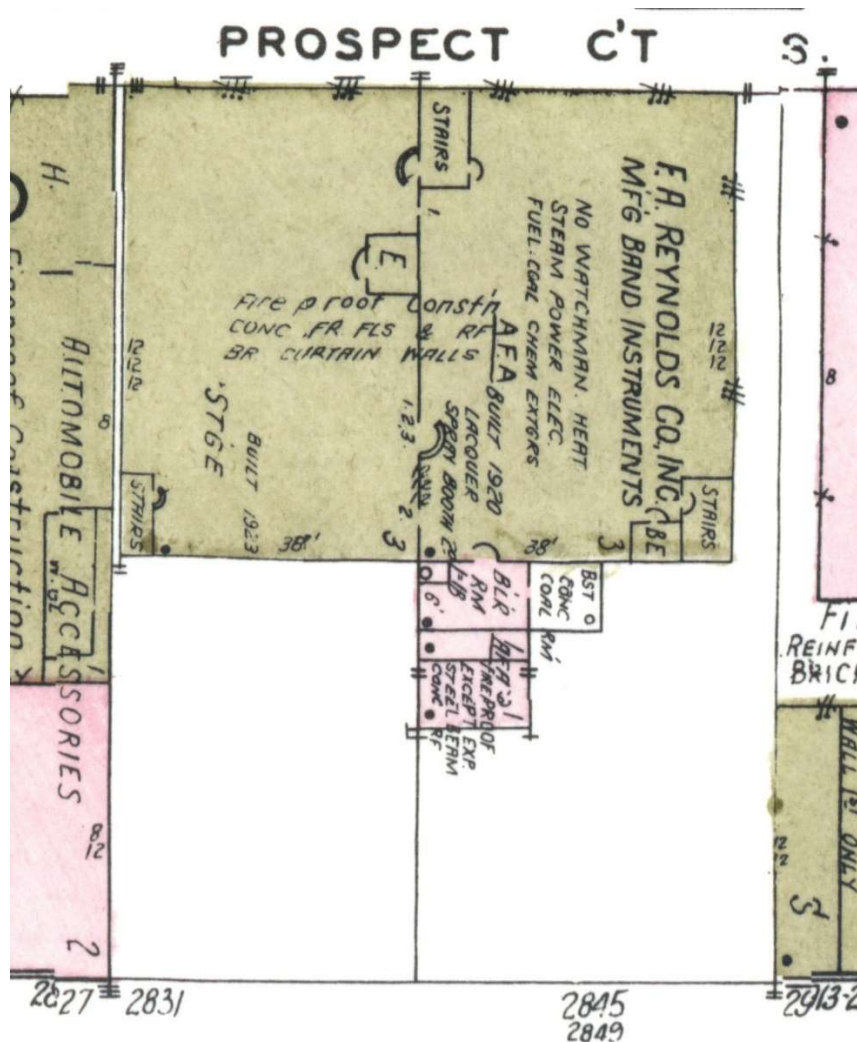


Reynolds original factory on Prospect Ave: 1935-1964



1952 Sanborn map below.

This shows that the right half was built in 1920 and the left half in 1923. Made from concrete with a brick veneer and three stories tall. The overall dimensions were 130' wide by 100' deep by 38' high.



Engraving & cornet photos from internet auctions.